

## 4 USE AND FUNCTIONING

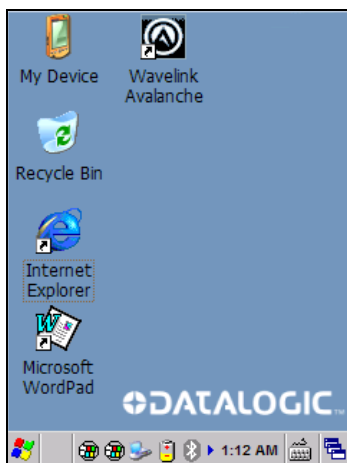
The use of the Falcon X3+ depends on the application software loaded. However there are several parameters that can be set and utilities that can be used to perform some basic functions such as data capture, communications, file management, etc

### 4.1 STARTUP

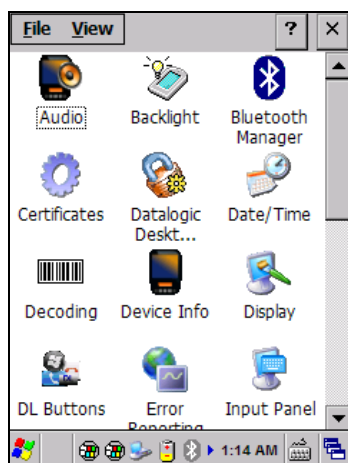
The Falcon X3+ turns on when the battery pack or the external supply is inserted and the ON/OFF Power button is pressed.

After the battery pack is installed, use the [ON/OFF] key to turn the mobile computer on and off.

As soon as the mobile computer is on, the Windows CE 6.0 desktop will appear on the screen. Wait a few seconds before starting any activity so that the mobile computer completes its startup procedure.



Desktop



Control Panel

Use the stylus (par. 4.1.1) as suggested to select icons and options.

The mobile computer goes into power-off (low power with display and keyboard backlight off), when it is not used for more than a programmable timeout, which is defined in the POWER applet of the Control Panel. In this mode it can be awakened (resuming operation) by the [ON/OFF] key.

**NOTE**

*The mobile computer can also be awakened or suspended programmatically.*

### 4.1.1 Using the Stylus

The stylus selects items and enters information. The stylus functions like a mouse.

<b>Double Tap:</b>	Double tap the screen with the stylus to open items and select options.
<b>Drag:</b>	Hold the stylus on the screen and drag across the screen to select text and images. Drag in a list to select multiple items.
<b>Tap-and-hold:</b>	Tap and hold the stylus on an item to see a list of actions available for that item. On the pop-up menu that appears, tap the action you want to perform.

To recalibrate the touch screen use the Stylus Applet (see par. 4.6.7).

**CAUTION**

*Use only original Datalogic styluses supplied with the product itself.*

*In harsh applications, use of screen protectors should be taken into consideration, in order to extend the touch screen operating life.*

*To prevent damage to the screen, do not use sharp objects or any tool other than the Datalogic provided stylus.*

*Do not apply not necessary high pressures on the screen.*

*For applications where an intensive use of the touch screen is foreseen, please consider that touch screen components are subject to progressive wear.*

### 4.1.2 Touch Gestures

Touch gestures describe gestures in which you use a finger or stylus to make a short, directional movement over a control or object on the screen. Most gestures are a single stroke. Windows CE supports five kinds of gestures.

<b>Tap:</b>	A tap represents the left click of a mouse.
<b>Double Tap:</b>	A double tap represents the left double click of a mouse.
<b>Hold:</b>	The user can press and hold on the screen to represent the right click of a mouse.
<b>Flick:</b>	The user can move a finger across the screen to initiate per-pixel scrolling, and if this movement is fast enough, scrolling will continue after the finger is lifted.
<b>Pan:</b>	The user can press and hold on the screen and then drag the finger in any direction to represent a mouse move event.

## 4.7 CONNECTING TO OTHER COMPUTERS

There is more than one way to connect the Falcon X3+ to a host PC running Windows. Each requires specific connections in order to function properly.

### 4.7.1 Windows Mobile® Device Center

The desktop application Windows Mobile® Device Center gives you the ability to synchronize information between a desktop computer and your Falcon X3+. Synchronization compares the data on the Falcon X3+ with that on the desktop computer and updates both with the most recent information.

Windows Mobile® Device Center can be downloaded from Microsoft website [www.microsoft.com](http://www.microsoft.com). It is only compatible with Windows Vista and Windows 7; if you run Windows XP or earlier, you have to download Microsoft ActiveSync.

You can establish a connection to your Falcon X3+ through the following interfaces:

- USB either directly or through the Single Dock
- RS232 either directly or through the Single Dock
- Bluetooth® (see par. 4.7.2)

To establish a partnership between the Falcon X3+ and a host PC, start Windows Mobile® Device Center and follow the steps below:

1. Connect the Falcon X3+ to the host PC. Windows Mobile® Device Center configures itself and then opens.
2. On the license agreement screen, click Accept.
3. On the Windows Mobile Device Center's Home screen, click Set up your device.
4. Select the information types that you want to synchronize, then click Next.
5. Enter a device name and click Set Up.

When you finish the setup wizard, Windows Mobile Device Center synchronises the PDA automatically. Microsoft® Office Outlook® emails and other information will appear on your device after synchronization.

**NOTE**

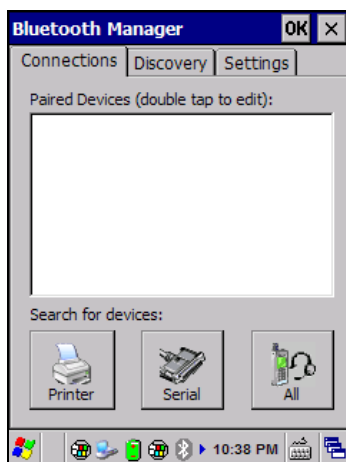
*The Falcon X3+ running Windows CE does not come equipped with Microsoft Office Outlook or any other application that allows users to view contact, calendar, e-mail, or task data. Users can view files copied to the Falcon X3+ by WMDC's file synchronization feature.*

## 4.7.2 Bluetooth® Manager Device Setup

### Using the Falcon X3+ to connect to another device

To create a Bluetooth® pairing between your device and another device that has Bluetooth® capabilities, ensure that the two devices are turned on, discoverable, and within close range.

1. From the Bluetooth Manager control panel tap 'Connections'.



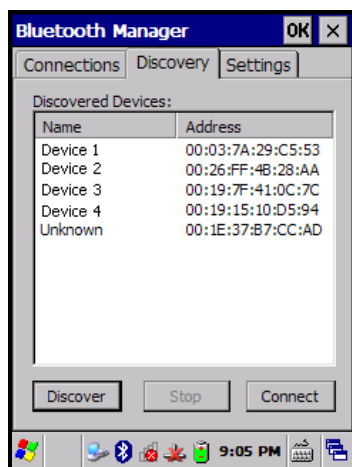
2. Search for available Bluetooth® devices by tapping the button for the type of device you want (Printer, Serial or All) or tap Discovery > Discover to skip this step. The Falcon X3+ will search for Bluetooth® devices within range.



#### NOTE

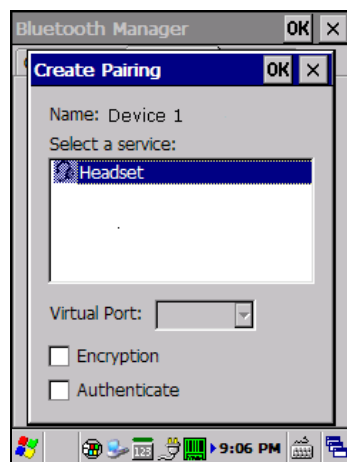
*If you attempt to set up a connection when the Bluetooth® radio is disabled, you will receive a message reminding you that the radio is turned off, and asking if you want to turn it on. Tap Yes if you need to enable the Bluetooth® radio.*

- Once searching is complete, Bluetooth® device Profiles will be displayed in the Discovery tab. You can set up a connection to a device in the list by selecting the device and then tapping the 'Connect' button:













To create a pairing:

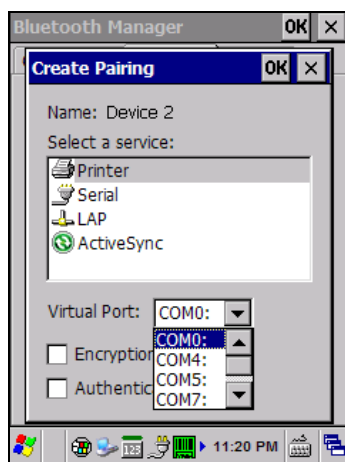
- Select a service:



- Configure any encryption, authentication, or virtual port options required by the service selected.

Icon	Service
	Dialup Networking
	Printer
	Object Push (OPP) Object Exchange (OBEX)
	ActiveSync
	Human Interface Device (HID) - Keyboard
	Serial
	Personal Area Network (PAN)
	Modem
	Headset
	Handsfree

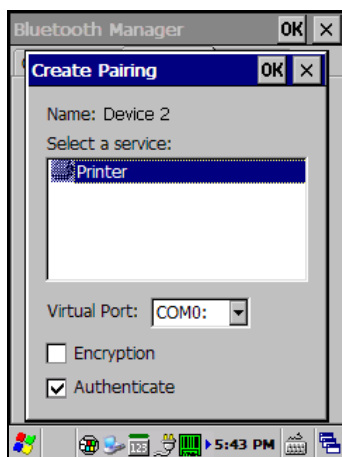
Virtual Port allows you to specify the incoming port, which is used to communicate serially with an incoming device just as if it were a physical COM port. This option is available only if you have selected a Printer or Serial service.



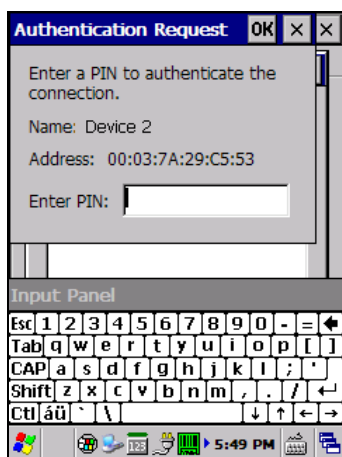


You can also select Encrypt or Authenticate from the Bluetooth® control panel to apply or modify those settings.

1. To require Authentication, check the checkbox, then tap OK.



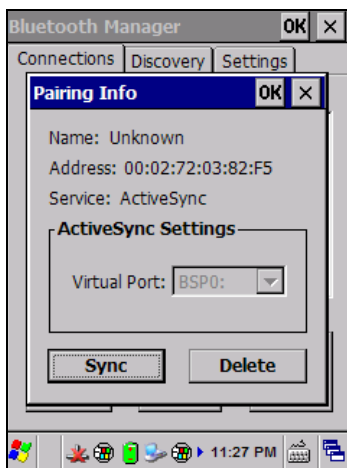
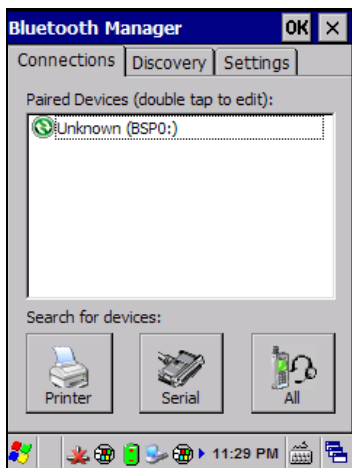
2. If required, the Authentication Request dialog will then open, requesting that you enter a PIN. Use the Input Panel or the keyboard to type the PIN.



3. Tap OK to complete.

The dialog will also appear when an Authentication request is received from another device.

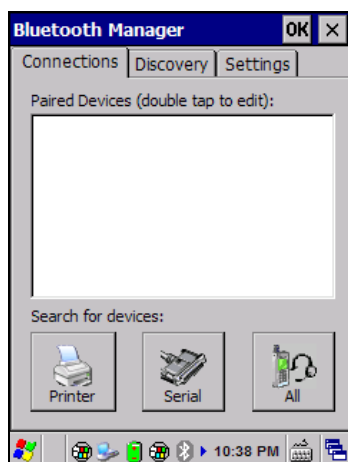
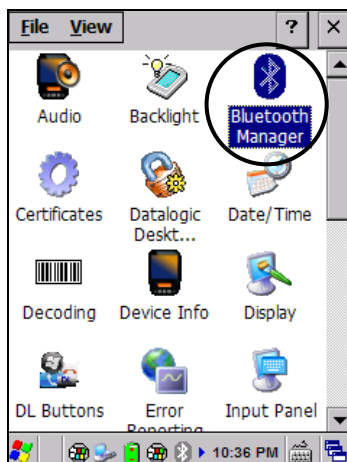
Once you have set up a pairing, you can view the settings by double-tapping its name from the Connections tab. Tap the arrow to change the Virtual Port, or Delete to remove the device pairing. Tap Sync to initiate a Sync (available only if the service is an ActiveSync connection).



## Using your device to connect to the Falcon X3+

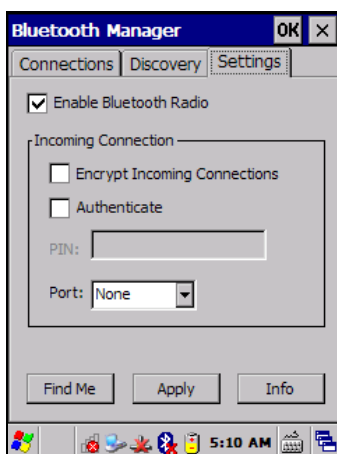
Before turning on Bluetooth®, ensure that the two devices are within close range and that both Bluetooth-enabled devices are discoverable.

1. From the control panel main window, double tap the Bluetooth Manager icon to open the Bluetooth Manager control panel.



2. Tap Settings. The Settings tab allows you to enable or disable the Bluetooth® radio and specify settings for Incoming Connections.

3. Select or clear the “Enable Bluetooth Radio” check box.  
If you're going to be attaching a serial device (i.e. a scanner) to the Falcon X3, use the Port control to select a virtual COM port to use for the connection.



5. Tap 'Find Me' if you want to make the FalconX3 discoverable to other Bluetooth® devices for 60 seconds, allowing them to set up a connection.

**NOTE**

*By default, Bluetooth® is turned off. If you turn it on, and then turn off your device, Bluetooth® also turns off. When you turn on your device again, Bluetooth® turns on automatically.*