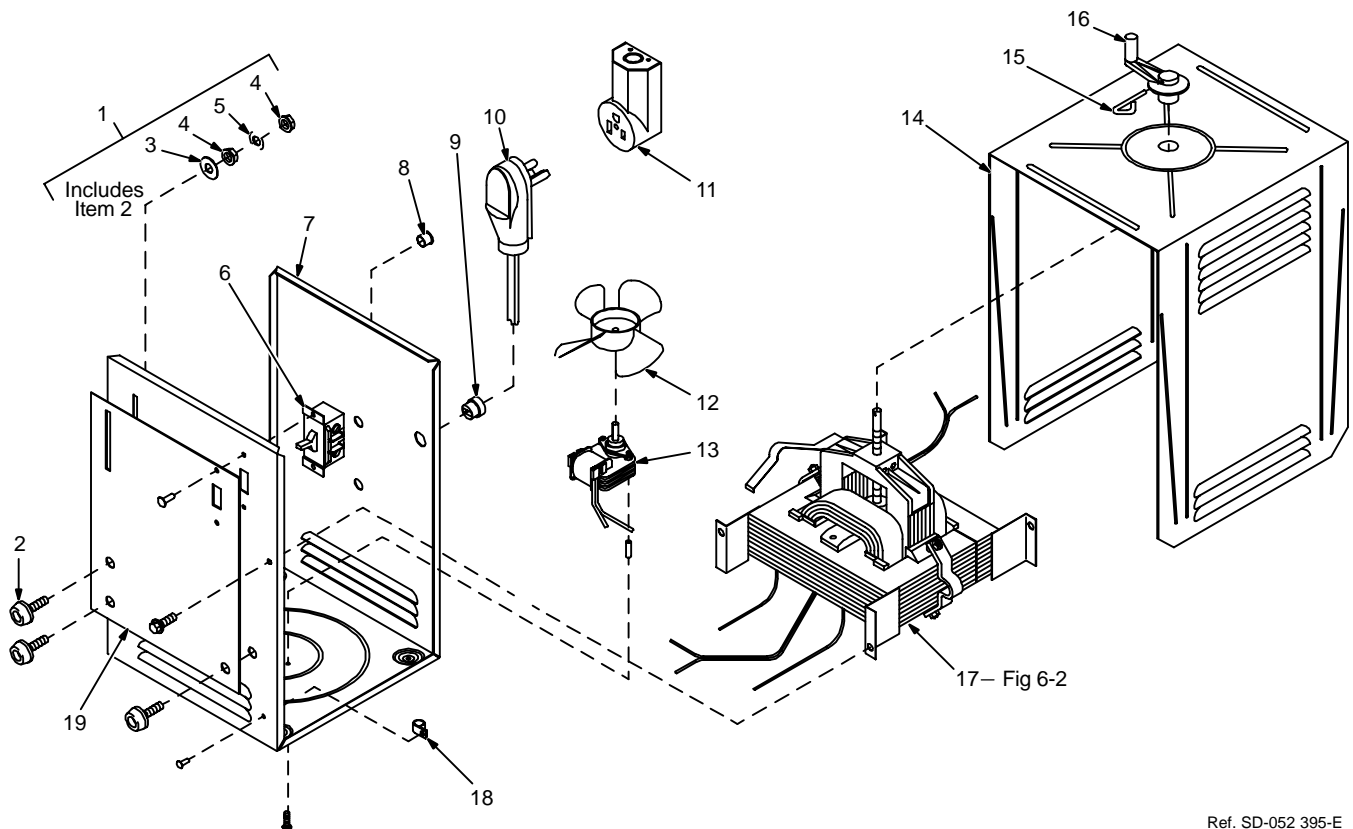


# SECTION 6 – PARTS LIST

Item No.	Dia. Mkgs.	Part No.	Description	Quantity
1		039 800	RECEPTACLE, jack plug red (consisting of)	3
2		006 095	RECEPTACLE & NUT, jack plug red	1
3		010 291	WASHER, flat nylafil .625 ID x 1.250 OD x .125thk	1
4		604 668	NUT, stl slflkg hex med fnsh .500-20	2
5		174 491	WASHER, lock intl tooth .500	1
		601 881	NUT, stl hex jam .500-20	1
6	S1	*124 511	SWITCH, tgl DPST 40A 600VAC	1
7		088 372	CASE SECTION, base/front/rear	1
8		024 103	BLANK, snap-in .750mtg hole	2
9		111 443	BUSHING, strain relief .240/.510 ID x .875mtg hole	1
10		088 297	CORD SET, 250V 6-50P 12ga 3/c 6ft	1
11		039 778	RECEPTACLE, str 2P3W 50A 250V	1
12		005 656	BLADE, fan 6 in 4wg 30deg .175 bore CW	1
13	FM	123 468	MOTOR, 230V 50/60Hz 3000RPM	1
14		082 272	WRAPPER	1
15		009 926	PIN, handle control current	1
16		009 433	HANDLE, control current	1
17	T1	117 668	TRANSFORMER & SHUNT, (230V) (Fig 6-2)	1
18		010 142	CLAMP, nyl .312clp dia	2
19			NAMEPLATE, (order by model and serial number)	1
		174 453	HOLDER, electrode w/cable	1
		174 456	GROUND CABLE, w/clamp 10ft	1



Ref. SD-052 395-E

Figure 6-1. Main Assembly

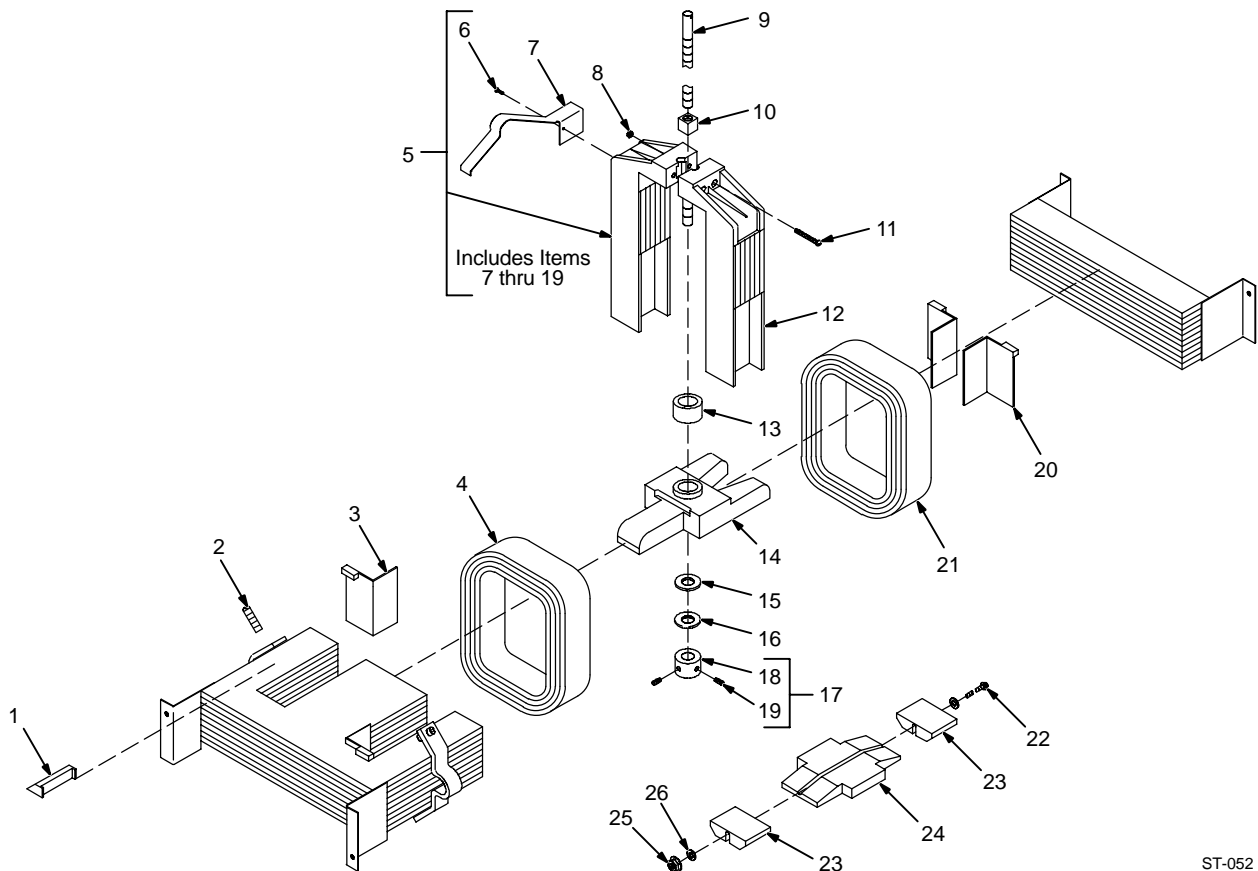
\*Recommended Spare Parts.

BE SURE TO PROVIDE MODEL AND SERIAL NUMBER WHEN ORDERING REPLACEMENT PARTS.

Item No.	Dia. Mkgs.	Part No.	Description	Quantity
----------	------------	----------	-------------	----------

**Figure 6-2. Transformer & Shunt (Fig 6-1 Item 17)**

1		080 522	BLOCK, anti-noise shunt	4
2		147 907	SCREW, set stl hdls .312-18 x 1.500 slflkg	4
3		112 569	INSULATION, coil sec	2
4	SEC	112 488	COIL, sec	1
5		119 962	SHUNT, transformer (consisting of)	1
6		+081 821	SCREW, slftpg filph 8-11 x .500	1
7		+009 312	INDICATOR	1
8		601 860	NUT, stl hex 8-32	2
9		009 428	SCREW, lead shunt	1
10		021 100	NUT, lead scr	1
11		602 087	SCREW, mach stl rdh 8-32 x 1.250	2
12		036 356	BLOCK, shunt	1
13		119 963	TUBING, phen .531 ID x .875 OD x .500	1
14		020 284	WEDGE, coil	1
15		010 653	BEARING, thr oil imprg .375 ID x .750 OD x .062	1
16		010 929	WASHER, flat stl spr .375	1
17		024 869	COLLAR, set w/screws (consisting of)	1
18		024 612	COLLAR, set	1
19		602 176	SCREW, set stl sch .250-20 x .187knr cup point	2
20		112 573	INSULATION, coil pri	2
21	PRI	112 498	COIL, pri (230V)	1
22		605 129	SCREW, cap stl hexhd .250-20 x 7.000	1
23		020 300	WEDGE, rear removable	2
24		020 301	GUIDE, wedge rear	1
25		089 800	NUT, stl flg lkd hex .250-20	1
26		602 241	WASHER, flat stl SAE .250	1



ST-052 396-F

**Figure 6-2. Transformer & Shunt**

+Not part of Shunt Assembly

BE SURE TO PROVIDE MODEL AND SERIAL NUMBER WHEN ORDERING REPLACEMENT PARTS.

## OPTIONS AND ACCESSORIES

### **No. 11A RUNNING GEAR (#041 637)**

A handle and two wheels with solid rubber tires mount easily to the frame of the Thunderbolt 225, providing convenient portability.